

Product catalogue

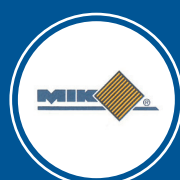
Made in Germany

Timeline



1976

Development of the first cast panel with diagonal gaps.



1979

Change of company name to MIK Heinrich Michel.

The drainage system "Grüne Rinne" is part of the range.



1992

MIK Thermo, the first warm water heating panel for piglets, is introduced to the market.



2000

Change of company name to MIK INTERNATIONAL.



2008

The unique plastic panel CHESS with its special surface is introduced to the market.



2018

50th company anniversary.

1968

In 1968, the company Heinrich Michel Agrarbautechnik is founded by Heinrich Michel.



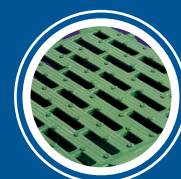
1978

Introduction of the worldwide first plastic panels for pigs.



1980

MIK SK (for sheep and calves) and FS (for piglets and sows) are developed and introduced to the world market.



1998

Introduction of the 800 mm wide panels, i.e. Trapper; introduction of the new comic advertising line.



2001

The 250.000th Thermo W is sold in golden colour.



2011

Bistro W feeders and the MIK penning system widen the product range.



2022

Thermochromic heating plates are awarded with the Innovation Award EuroTier – Silver Medal.



General overview

Farrowing

Farrowing panel systems	4
SWING and variations	5
Concrete inlets	7
CAST panel system	8
THERMO heating systems	9

Nursery & finishing

Panels for piglets & finishing	14
CHESS & RUBIN	15
TRAPPER & SMARAGD	16

Calves and milking parlours

Milking parlour flooring & calf panels	17
TRAPPER, STEPPER & SMARAGD	18
Calf box	19

Sheep & goat farming

Sheep & goat panel systems	20
STEPPER	21

Poultry slat & broiler slat

Poultry slat	22
Broiler slat	23

DUO support beam system 24

Penning systems

Pig farrowing, nursery & finishing	26
------------------------------------	----

Dividing boards 28

BISTRO feeders

BISTRO Feeders, Drop Feeders, feeding pan, corner	29
--	----

Conveyor chains 35

Accessories

Edge strips, support strips, installation material Gully, "Grüne Rinne", ROLLS & TOY	36
---	----

Layout samples 42

Innovation and quality 43

Farrowing panel systems

Optimal step safety with specially designed surfaces

Product benefits

- stable and hygienic
- versatile and animal friendly
- extremely strong and durable



SWING

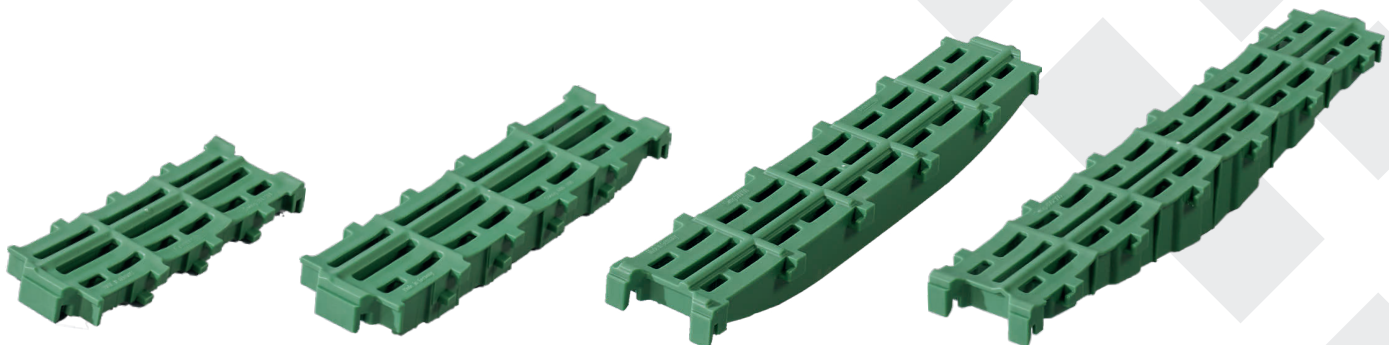
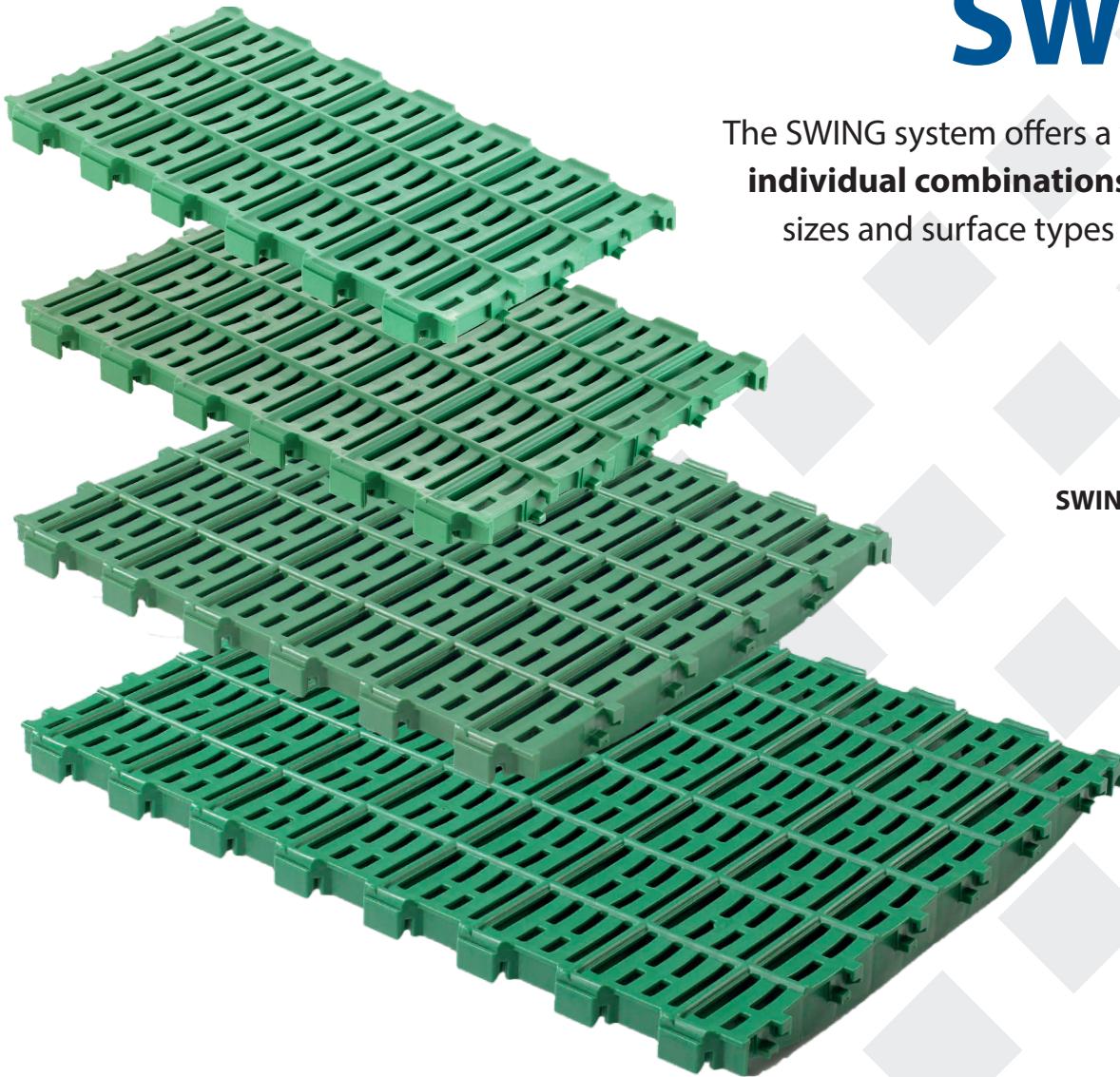
The SWING system offers a wide variety of **individual combinations** with different sizes and surface types for **farrowing**.

SWING 300 × 600

SWING 400 × 600

SWING 500 × 600

SWING Titan 600 × 800



SWING 300 × 100

SWING 400 × 100

SWING 500 × 100

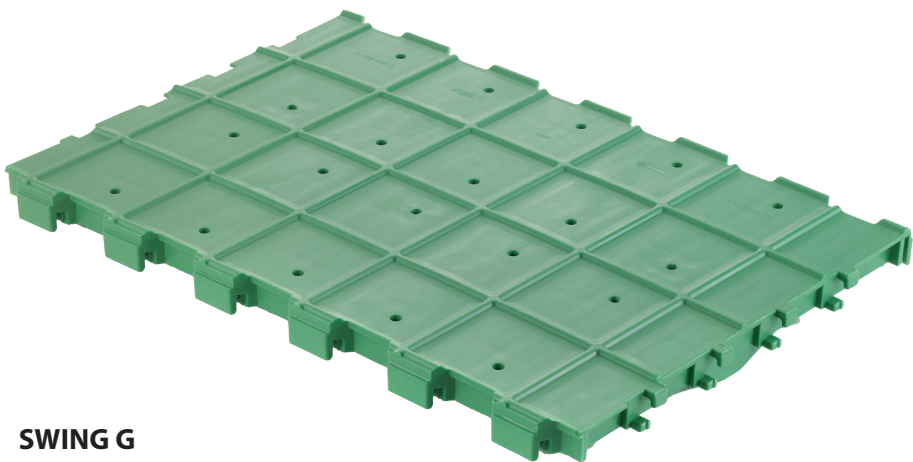
SWING Titan 600 × 100

	SWING 300 × 600	SWING 300 × 100	SWING 400 × 600	SWING 400 × 100	SWING 500 × 600	SWING 500 × 100	SWING Titan 600 × 800	SWING Titan 600 × 100
Item no.	00148	00147	00145	00149	00135	00137	00111	00151
Measurements in mm*	300 × 600	300 × 100	400 × 600	400 × 100	500 × 600	500 × 100	600 × 800	600 × 100
Opening width	10 mm	10 mm	10 mm	10 mm	10 mm	10 mm	10 mm	10 mm
Percentage of opening	29 %	29 %	29 %	29 %	29 %	29 %	29 %	29 %
Animal weight	350 kg	350 kg	350 kg	350 kg	350 kg	350 kg	350 kg	350 kg

* Dimensions in width × length

SWING variations

The different SWING series panels allow the **varying laying requirements** for the sows’ shoulders, teats and rear legs to be accommodated ideally.



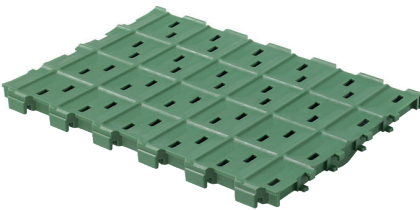
SWING G

NEW

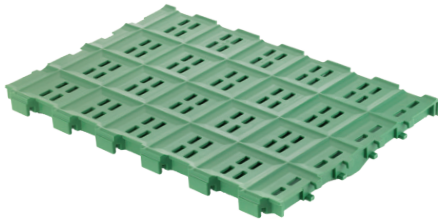
Suitable for matching SWING panels:
SWING CLIP GR



SWING G 3 %



SWING G 5 %



SWING G 10 %



SWING GR



SWING GR 100



TITAN GR

	SWING CLIP GR	SWING G	SWING G 3 %	SWING G 5 %	SWING G 10 %	SWING GR	SWING GR 100	TITAN GR
Item no.	00286	00146	00132	00133	00150	00142	00341	00339
Measurements in mm*	100×100	400×600	300×600	400×600	400×600	400×600	400×100	600×800
Opening width	–	–	10 mm	10 mm	10 mm	–	–	–
Percentage of opening	0 %	0,7 %	3 %	5 %	10 %	0,7 %	0 %	0 %
Animal weight	350 kg	350 kg	350 kg	350 kg	350 kg	350 kg	350 kg	350 kg

* Dimensions in width × length

Concrete inlets

The concrete inlets can be integrated in the **MIK flooring system** by using the support strips for inlets. They can have a **cooling and hoof trimming effect**.



BT 60 P



BT 60 S



BT 60 G



BT 60 – 70 P



BT 40 S



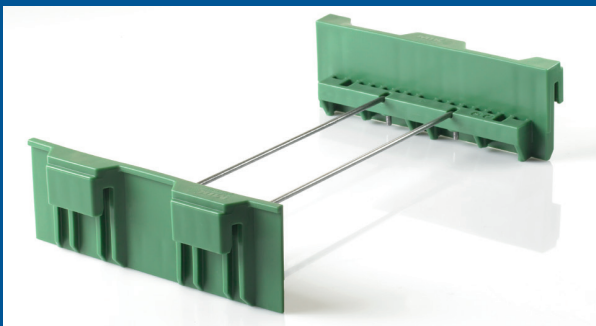
BT 40 G

	BT 60 G	BT 60 P	BT 40 S	BT 40 G	BT 60 S	BT 60 – 70 P	BT 60 – 70 G	BT 60 – 70 S	BT 50 S
Item no.	39013	39014	39016	39018	39021	39029	39030	39031	39035
Measurements in mm*	600×600	600×600	400×600	400×600	600×600	600×700	600×700	600×700	500×600
Height mm	50	50	40	40	50	50	50	50	50
Opening width	–	13 mm	8 mm	–	10 mm	13 mm	–	10 mm	10 mm
Percentage of opening	0%	7%	3%	0%	5%	7%	0%	5%	5%

* Dimensions in width × length | an opening of 10 mm occurs by laying

Support strips for inlets

Support strips are available in two different heights.
Wire bows available in different lengths.



	Support strip 40 mm	Support strip 50 mm	Wire bow 400	Wire bow 500	Wire bow 600	Wire bow 1200
Item no.	04200	04201	03998	03997	03996	03999
Length	200 mm	200 mm	400 mm	500 mm	600 mm	1.200 mm

CAST panel system

An extensive assortment of cast panels **matching the MIK flooring system** is available to complement the plastic panels. The CAST panels feature the same, **long-proven surface with the familiar foot holds** and give the **necessary grip** when standing up and lying down **even to sows with fundamental weaknesses**.



Product benefits

- stable standing also for problem sows
- optimised surface geometry
- ideally combinable with MIK panel systems
- post-installation in MIK flooring possible

Other sizes available on request.



	CAST C 400×600	CAST C 400×600 G	CAST C 600×600	CAST C 600×600 G	CAST C 600×700 G	CAST C 600×200
Item no.	00510	00515	00530	00535	00545	00560
Measurements in mm*	400×600	400×600	600×600	600×600	600×700	600×200
Opening width	10 mm	–	10 mm	–	–	10 mm
Percentage of opening	35 %	3 %	35 %	3 %	3 %	35 %
Animal weight	350 kg	350 kg	350 kg	350 kg	350 kg	350 kg

* Dimensions in width × length

THERMO heating systems

Heating technology in king-size dimensions

Product benefits

- high energy efficiency
- homogeneous heat distribution
- warm water or electric panel



THERMO W 400 × 600

The warm water operated THERMO W 400 × 600 allows a flexible arrangement of panels, is very suitable for the **cost conscious remodelling of existing installations** and has **greatly proved itself as a reliable heating in nursery systems.**

Product benefits

- slip resistant surface with recesses
- flexible arrangement of heating panels
- proven technology for more than 25 years
- compact heating panel

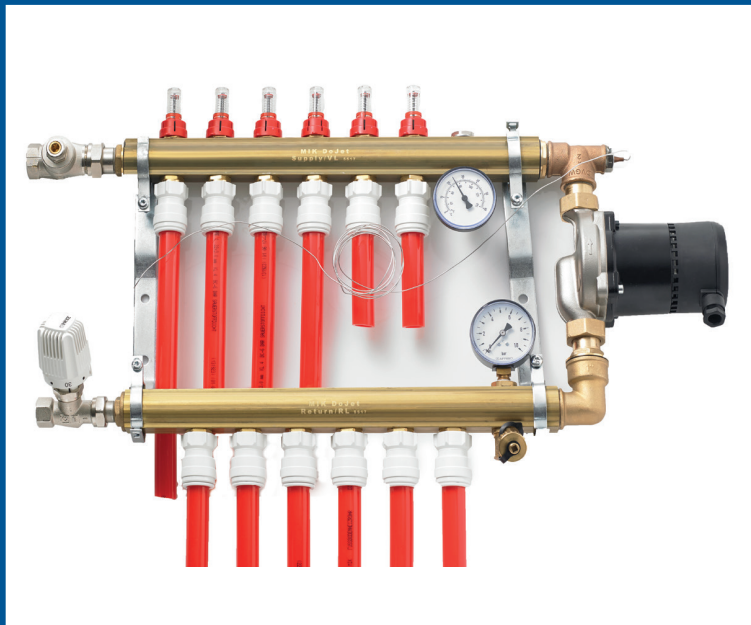
THERMO W 400 × 600



THERMO W 400 × 600	
Item no.	00152
Measurements in mm*	400 × 600
Average power consumption**	60 Watt

* Dimensions in width × length
** Average values in running operation.
Heat exchanger is required (THERMO W 400 × 600)

Accessories



DoJet control unit with 2 – 6 circuits

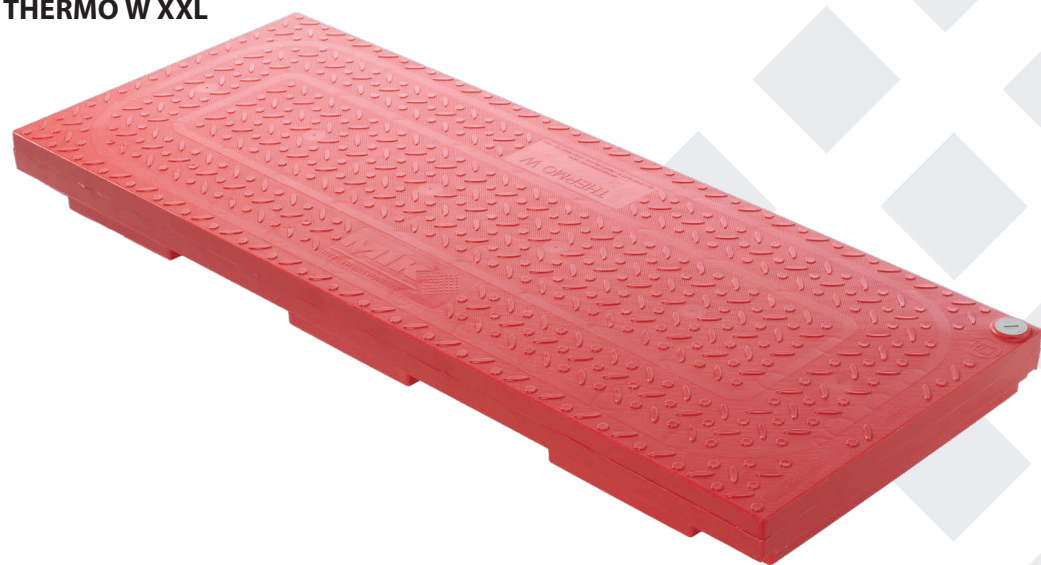


WTP 30 E heat exchanger with expansion tank

THERMO W XXL

Thanks to its extra-large size, the **THERMO W XXL only requires a few connection accessories.** They combine **high energy efficiency with an absolutely homogeneous heat distribution.**

THERMO W XXL



Product benefits

- air free filling for ideal heat distribution
- reliable anti-slip surface for safe movement
- slightly concave surface for good drainage
- high resting comfort
- operation without seperate heat exchanger
- fast warming – and slow cooling process
- optimal hygiene with a completely closed panel
- revolving drip edge

	THERMO W 400×1200	THERMO W 500×1200	THERMO W 600×1200	THERMO W 500×1600
Item no.	03990	03984	03985	04970
Measurements in mm*	400×1200	500×1200	600×1200	500×1600
Average power consumption**	55 Watt	63 Watt	73 Watt	105 Watt

* Dimensions in width × length ** Average values in running operation. Heat exchanger is required (THERMO W 400x600)



Thermochromic heating panel

Award-winning feature for the THERMO W and THERMO E heating panels: It is now possible to visually check function and temperature level of the heating panels by the colour of the the surface.

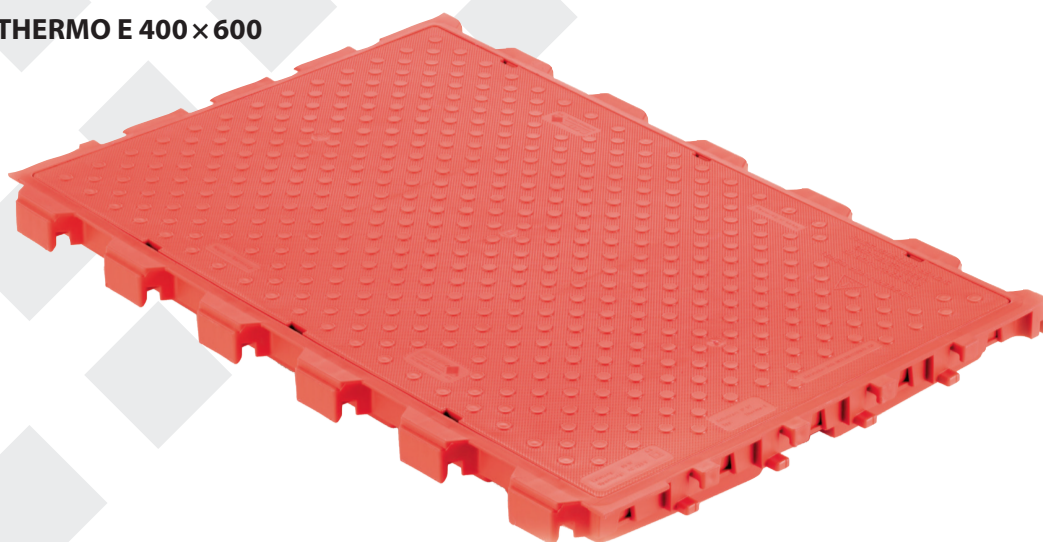
THERMO E 400 × 600

The electrically driven Thermo E 400 x 600 allows a **flexible arrangement of panels**, is very suitable for the **cost conscious remodelling of existing installations** and has **greatly proved itself** as a **reliable heating** in nursery systems.

Product benefits

- anti-slip knobbed surface
- flexible arrangement of thermal nests
- cost-efficient solution for small operations
- compact heating panel

THERMO E 400 × 600



	THERMO E 400 × 600	TR-A analogue control unit	TR-D digital control unit	Insta contactor
Item no.	00115: with sensor 00114: without sensor	03541	03542	03573
Measurements in mm*	400 × 600			
Average power consumption**	55 Watt			

* Dimensions in width × length ** Average values in running operation

Accessories



TR-A analogue control unit



TR-D digital control unit



Insta contactor



protective box for TR-A and TR-D

THERMO E XXL

The **electrically heated** THERMO E offers the advantages of the THERMO W even **where no warm water heating equipment is available or desired.**

THERMO E XXL



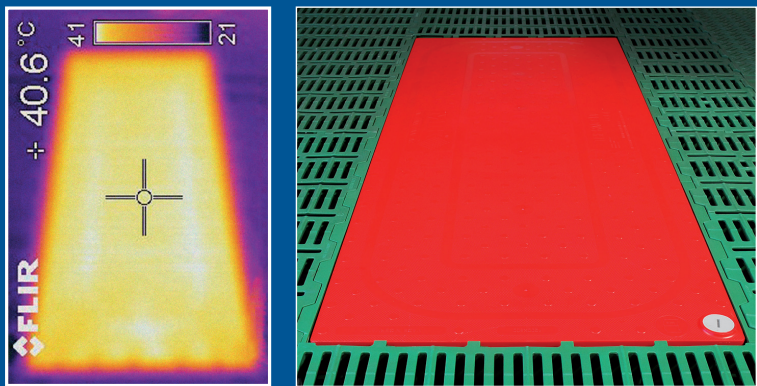
Product benefits

- uniform heat distribution for unique comfortable lying area
- proved anti-slip surface for high step-safety
- slight concave surface for good drainage
- warms up quickly and releases heat slowly
- revolving drip edge
- high resting comfort
- optimal hygiene with a completely closed panel
- replaceable heating cable

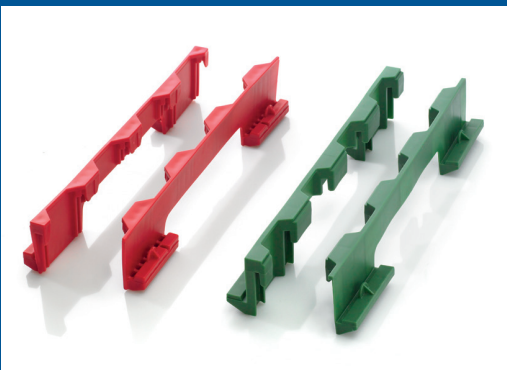
	THERMO E 400 × 1200	THERMO E 500 × 1200	THERMO E 600 × 1200
Item no.	04951: with sensor 04950: without sensor	04953: with sensor 04952: without sensor	04955: with sensor 04954: without sensor
Measurements in mm*	400 × 1200	500 × 1200	500 × 1200
Average power consumption**	63 Watt	73 Watt	105 Watt

* Dimensions in width × length ** Average values in running operation

Thermo W XXL heat image



Accessories



Hook strip – available for all MIK systems (red strips for universal use)

Panels for piglets & finishing

Discover the concept for successful piglet rearing

Product benefits

- slip-resistant surface
- self-cleaning
- compatible with all MIK heating systems and concrete

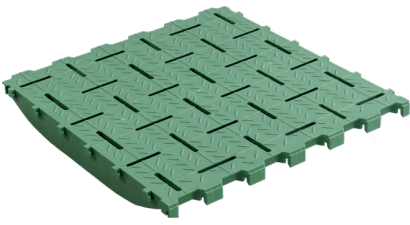


CHESS

The worldwide **unique slot base arrangement** with its chess board pattern **ensures an optimal step-safety** in any direction of movement.



CHESS 600×600



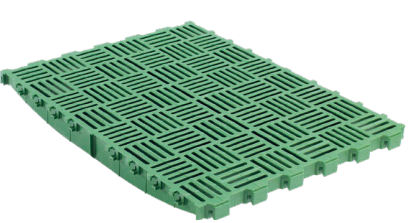
CHESS G 10 % 600×600



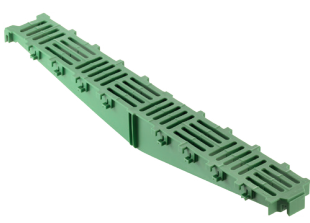
CHESS GR 600×600



TITAN GR



CHESS 800×600



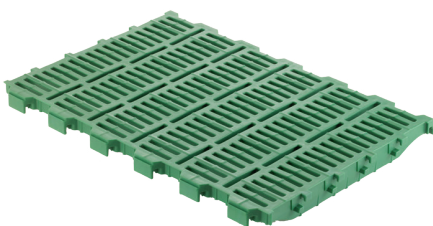
CHESS 800×100

	CHESS 600×600	CHESS G 10 %	CHESS GR	TITAN GR	CHESS 800×600	CHESS 800×100
Item no.	00336	00344	00343	00339	00330	00331
Measurements in mm*	600×600	600×600	600×600	600×800	800×600	800×100
Opening width	10 mm	10 mm	-	-	10 mm	10 mm
Percentage of opening	39%	10 %	0%	0%	39%	39%
Animal weight	90 kg	90 kg	90 kg	350 kg	60 kg	60 kg

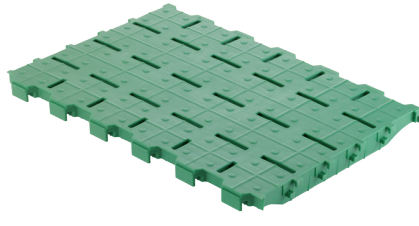
* Dimensions in width × length

RUBIN

RUBIN panels are used from **farrowing to pre-finishing**.



RUBIN



RUBIN G



RUBIN GR

	RUBIN 200×300	RUBIN 300×600	RUBIN 400×600	RUBIN 500×600	RUBIN G 400×600	RUBIN GR 200×300	RUBIN GR 400×600	RUBIN GR 500×600
Item no.	00091	00105	00104	00103 / 00138	00106	00096	00108	00219
Measurements in mm*	200×300	300×600	400×600	500×600 / 500×100	400×600	200×300	400×600	500×600
Opening width	10 mm	10 mm	10 mm	10 mm	10 mm	–	–	–
Percentage of opening	35%	38%	38%	38%	Drainage <10 %	0%	0%	0%
Animal weight	110 kg	110 kg	110 kg	110 kg	110 kg	110 kg	110 kg	110 kg

* Dimensions in width × length

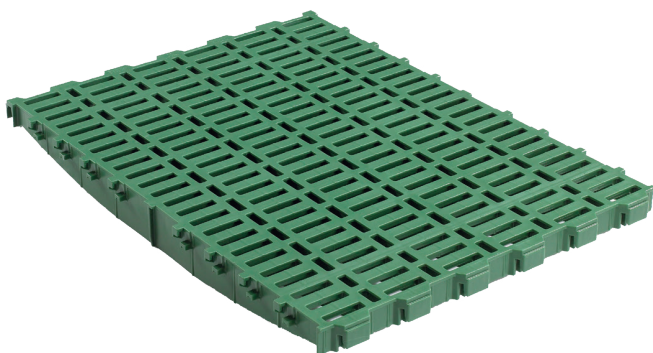
TRAPPER, SMARAGD

Finishing panels

The TRAPPER distinguishes itself in pre-finishing and finishing because of its **high bearing capacity and first class self-cleaning.**

Product benefits

- high bearing load and stability
- 14 mm opening width for optimal hygiene
- compatible with concrete slats
- ideal for wean-to-finish systems
- less support beams required



TRAPPER XL



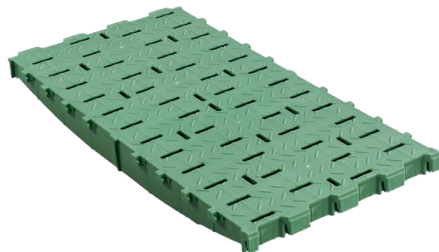
TRAPPER GR



SMARAGD



SMARAGD G 3 %



SMARAGD G 10 %

	TRAPPER	TRAPPER XL	TRAPPER GR	SMARAGD	SMARAGD G 3 %	SMARAGD G 10 %
Item no.	00313	00326	00318	00316	00327	00328
Measurements in mm*	800×400	800×600	800×400	800×400	800×400	800×400
Opening width	14 mm	14 mm	–	10 mm	10 mm	10 mm
Percentage of opening	35 %	35 %	0 %	27 %	3 %	10 %
Animal weight	200 kg	200 kg	200 kg	200 kg	200 kg	200 kg

* Dimensions in width × length

Milking parlour flooring & calf panels

Plastic for humans and calves – the safe alternative

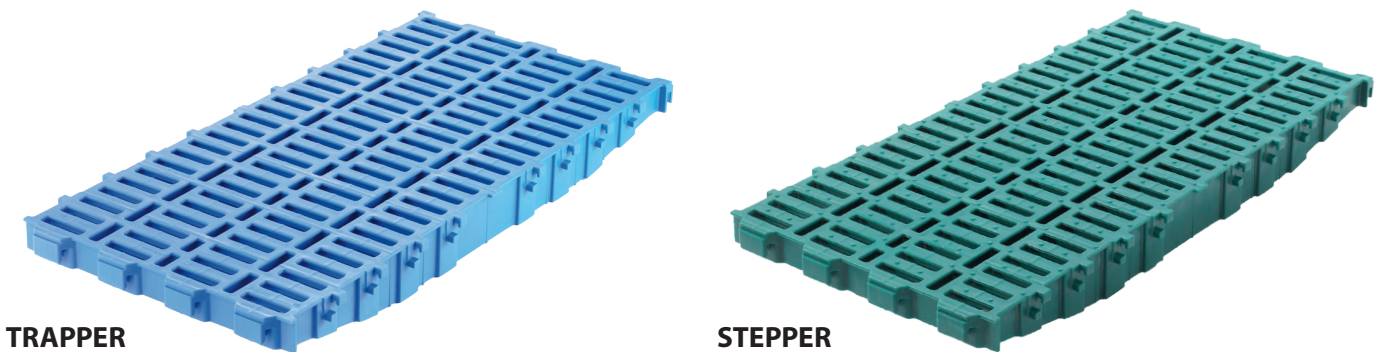
Product benefits

- outstanding stability
- extraordinary hygienic
- easy cleaning



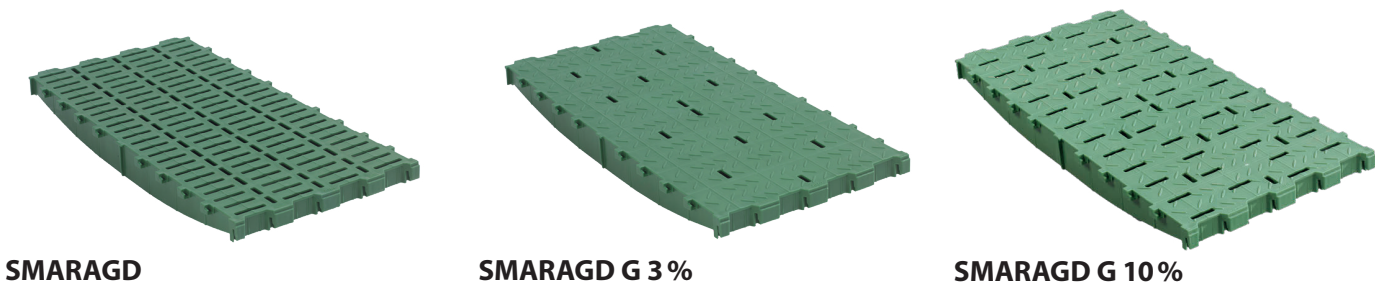
TRAPPER, STEPPER & SMARAGD

The temperature-neutral TRAPPER and STEPPER are increasingly used in calf rearing as an **economic and practical alternative** to concrete or wooden panels or beddings. The TRAPPER and STEPPER panels offer the milker a **safe and ergonomic workplace arrangement** in addition to **easy use and cleaning**.



Product benefits

- stable and longer lasting than timber
 - labour-extensive due to time-saving cleaning and effective drainage
 - very hygienic due to 20 mm opening and closed molecular material structure with high percentage of opening
 - easy to use and to install
- lower operating costs due to savings in bedding and its storage
 - underfloor ventilation with warm air also possible
 - anti-skid surface
 - slightly elastic, it is gentle to back and joints



	TRAPPER	STEPPER	SMARAGD	SMARAGD G 3%	SMARAGD G 10%
Item no.	green: 00313 blue: 00314 opal green: 00303	green: 00312 blue: 00310 opal green: 00308 white: 00309 grey: 00307	00316	00327	00328
Measurements in mm*	800×400	800×400	800×400	800×400	800×400
Opening width	14 mm	14 mm	10 mm	10 mm	10 mm
Percentage of opening	35 %	35 %	27 %	3 %	10 %
Animal weight	200 kg	200 kg	200 kg	200 kg	200 kg

* Dimensions in width x length

Calf box

The MIK calf box convinces by the **easy handling and the stable construction**. The use of MIK calf panels and dividing boards is the **basis for a hygienic and healthy calf housing**.



Product benefits

- hygienic, flexible, stable
- four swivelling wheels
- easy to clean
- different slats can be used as required
- calf can be fixed in front door
- stable galvanized frame

Options

- adjustable roof
- double bin holder
- also available as double-, triple- and fourfold box

	Single box	Single box XL	Double box	Double box XL
Item no.	K-00001	K-00002	K-00003	K-00004
Outer dimensions in mm	980 × 1550 × 1250	1080 × 1850 × 1250	1920 × 1550 × 1250	2120 × 1850 × 1250
Inner dimensions in mm	900 × 1200	1000 × 1600	1800 × 1200	2000 × 1600

Configuration of the box according to arrangement

Sheep & goat panel systems

Ideal grip with knobbed surface

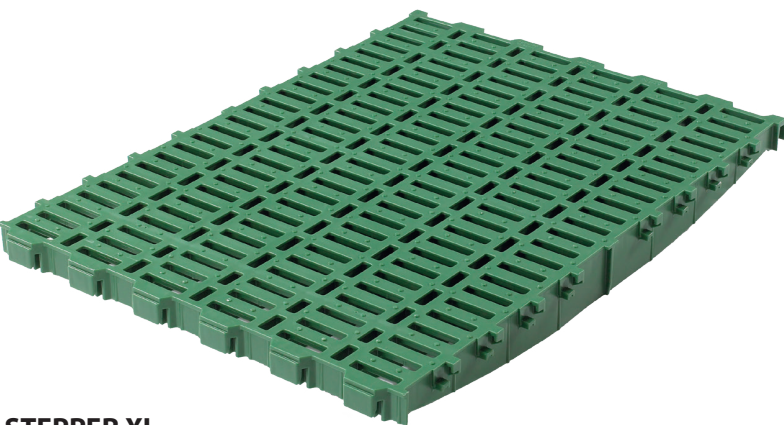
Product benefits

- proven knobbed surface especially for sheep & goats
- outstanding step-safety
- durable, clean and hygienic



STEPPER

The STEPPER panel was especially developed for sheep and goats. **Its proven surface provides the very best traction and stability.** High supporting beam savings due to 800 mm width. STEPPER convinces by **high stability and durability.**



STEPPER XL

Product benefits

- knobbed surface generates unique slide prevention and safe grip
- excellent self-cleaning due to 14 mm wide openings
- stability, durability and resistance
- allows moving safely and lying comfortably
- dry and temperature-neutral for healthier animals
- reduction of bedding, storage costs and labour input

	TRAPPER	TRAPPER XL	STEPPER	STEPPER XL
Item no.	00313	00326	00312	00325
Measurements in mm*	800×400	800×600	800×400	800×600
Opening width	14 mm	14 mm	14 mm	14 mm
Percentage of opening	35 %	35 %	35 %	35 %
Animal weight	200 kg	200 kg	200 kg	200 kg

* Dimensions in width × length

The stepper was designed for narrow claws and offers the best grip thanks to the knob structure.



Poultry slat & broiler slat

Increased feet comfort through rounded openings

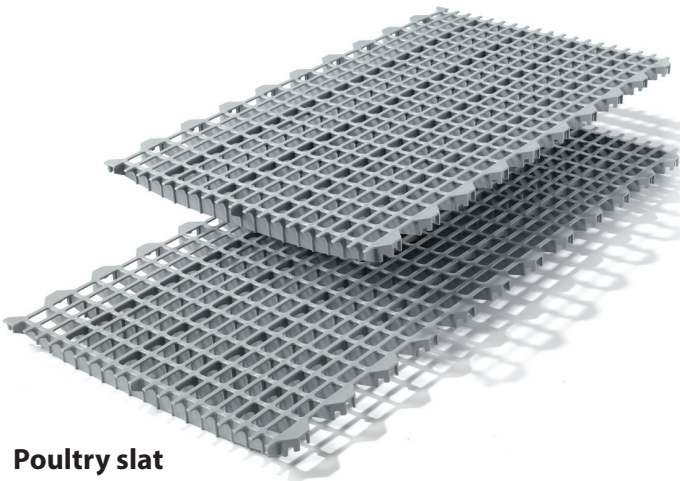
Product benefits

- outstanding step-safety
- durable, clean and hygienic



Poultry slat

The surface structure is characterized by a **self cleaning effect** and provides **optimal grip for the animals.**



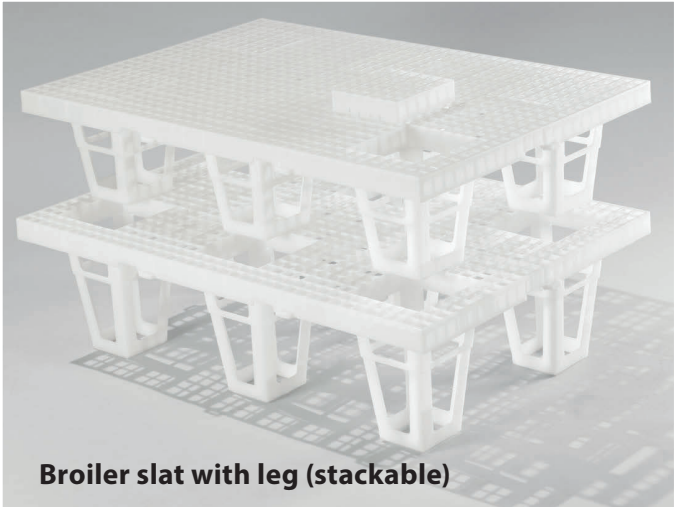
Poultry slat

Product benefits

- good manure passage through arched bridges and an open surface
- high bearing capacity and longevity
- simple and fast assembly
- easy to clean
- comfortable to walk on and reduced possibility of injury due to rounded edges
- avoidance of mite infestation through open style support bearer tabs

Broiler slat

The MIK broiler slat is designed to keep broilers **without using any litter.**
Due to the surface design the flooring offers a **perfect animal friendly and clean solution.**



Broiler slat with leg (stackable)

Product benefits

- available with leg system or for use with support beams
- leg type available in 3 different heights
- flooring ensures clean birds without any breast injuries
- easy and fast assembling / disassembling



Broiler slat

	Poultry slat 1000	Poultry slat 1200	Broiler slat leg type	Broiler slat support type
Item no.	natural: 40011 grey: 40010 black: 40012	natural: 40021 grey: 40020 black: 40022	height 200 mm: 40030 height 250 mm: 40031 height 300 mm: 40032	40040
Measurements in mm*	580 × 1000	580 × 1200	914 × 609	1219 × 609
Opening width	42 × 22	42 × 22	18,7 × 20	19,6 × 20,6
Percentage of opening	48 %	48 %	61 %	59,5 %

* Dimensions in width × length

DUO support beam system

The stable and long-lasting support system made of GRP

Product benefits

- delta profile for excellent stability
- non-corroding, resistant to acids and leaches
- easy and quick installation



Support beam system

The DUO support beam system is the **basis for the entire panel range**. The beams **made of composite fiberglass (GRP)** ensure a **stable and durable panel support**.



DUO



DUO Protect



End cap

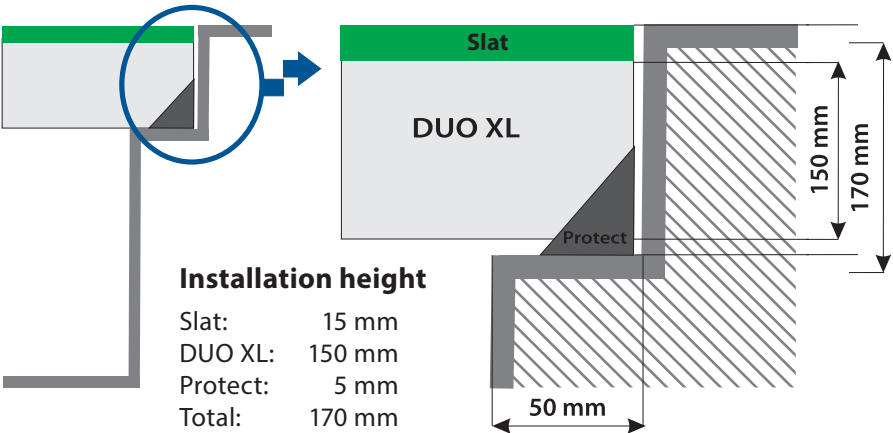


DUO supporting leg set

Product benefits

- high bearing load and stability due to delta-profile
- special DUO edge profile for additional interlocking with panel
- acid and leach resistant
- support leg system for wider spanning
- first class self cleaning
- no corrosion

Other beam types on request.



	DUO L	DUO XL	DUO Protect	End cap	DUO supporting leg set
Item no.	22000	20000	24130	24160	24100
Measurements in mm*	120×29	150×29			
Total installation height in mm**	140	170			

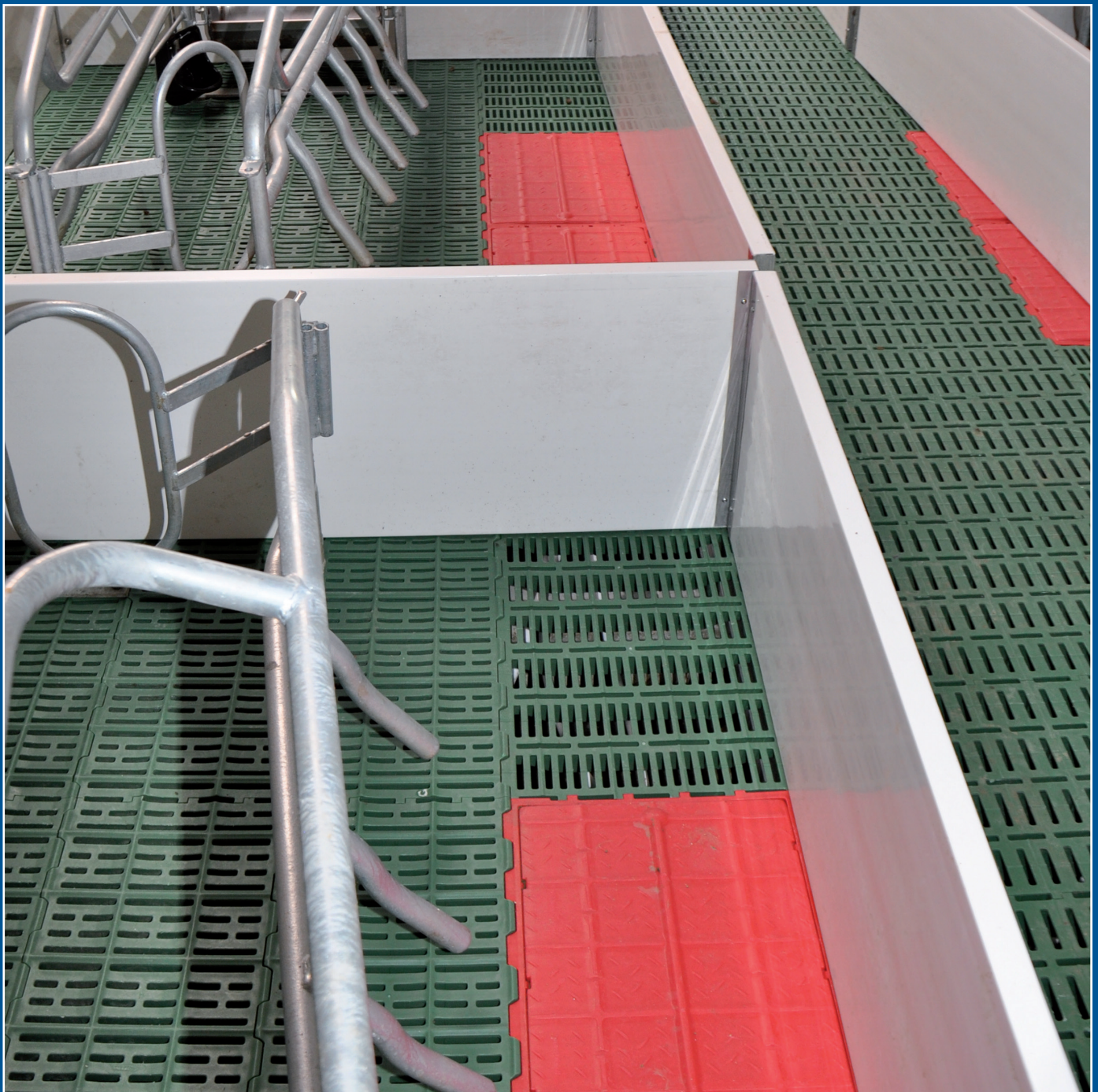
* Dimensions in width × length ** with panel and DUO Protect

Penning systems

Our easy-to-use penning system

Product benefits

- for single handed use
- optimised geometry for excellent stability
- simple and quick installation



Penning systems

The large number of profiles and single parts make the MIK penning systems **extremely flexible** and allow them to be **adapted to all pen and room sizes**.



Floor anchor, small

Item no.: A-00005



Lift stop door handle set

Item no.: A-00050



Stabilisator

Item no.: A-07545: 750



U-profile

Item no.: A-05005: 500 × 35
Item no.: A-07505: 750 × 35



Door profile, left

Item no.: A-05010-L: 500 × 35
Item no.: A-07510-L: 750 × 35



Door profile, right

Item no.: A-05010-R: 500 × 35
Item no.: A-07510-R: 750 × 35



Middle post

Item no.: A-05015: 500 × 35
Item no.: A-07515: 750 × 35



Corner post

Item no.: A-05020: 500 × 35
Item no.: A-07520: 750 × 35



Wall post

Item no.: A-05025: 500 × 35
Item no.: A-07525: 750 × 35



Corridor post

Item no.: A-07540: 750 × 35



Corner profile

Item no.: A-05030: 500 × 35
Item no.: A-07530: 750 × 35



T-profile

Item no.: A-05035: 500 × 35
Item no.: A-07535: 750 × 35



Delta profile

Item no.: A-07550: 750



Angle post 750

Item no.: A-07555: 750

**Further heights
and special posts
on request.**

Dividing boards

Hygienic and stable dividing boards

MIK PVC boards in different sizes and colours can optionally be delivered with tongues and grooves or with flat sides.

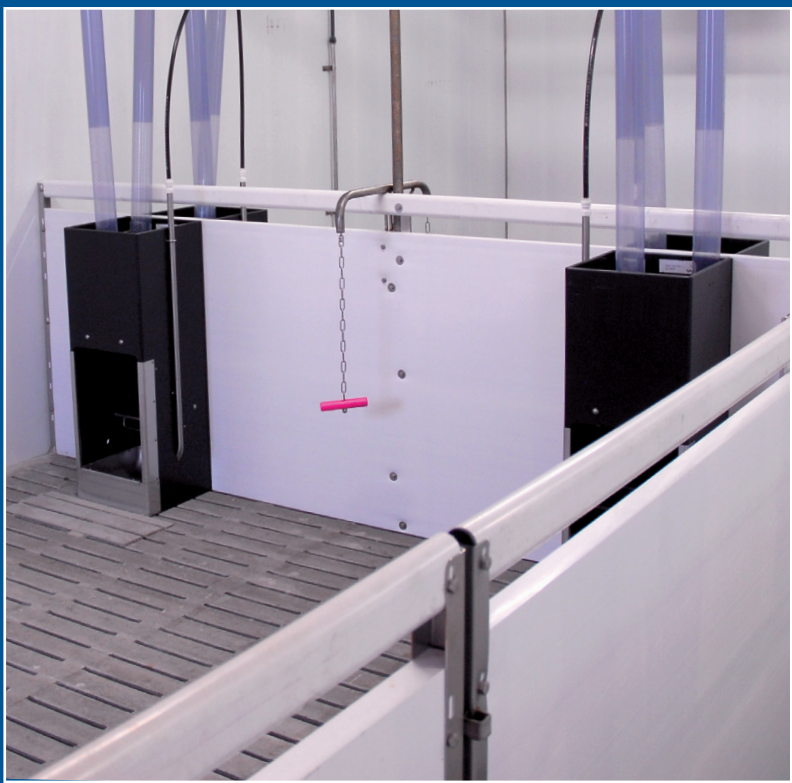
Product benefits

- smooth surfaces for optimal hygiene
- disinfectant, acid and leach resistant
- easy cleaning
- excellent stability by high quality material and strong walls
- easy installation

Options

- project-based production in exact lengths
- standard colours grey and white, others upon request

L-, U- and H- profiles and different end caps also available.



Profile type	250×35	500×35	600×35	750×35*	850×35*	1000×35*	500×50	Oval profile
Height mm	250	500	600	750	850	1000	500	70
Width mm	35	35	35	35	35	35	50	35
Version	tongue & groove	tongue & groove flat sides	flat sides	flat sides	flat sides	flat sides	flat sides	tongue & groove

* Available with reinforced walls

BISTRO feeders

The BISTRO for your pigs

Product benefits

- variable feed settings
- easy cleaning
- stable construction for reliable functionality



BISTRO W variations



Bistro W 90

Bistro W 100

- high and tapered cover for optimal feed hygiene and large openings for the feed inlet
- large translucent plastic hopper makes checking level of feed easy
- infinitely variable adjustment of feed supply
- stainless steel stirrer ensures continuous feed flow
- longevity through stainless steel frame
- oval hopper to prevent feed bridging
- long stainless steel water pipes; optionally available as a circular pipe
- robust bite protection for the plastic hopper
- standard supply with two nipple drinkers
- high quality stainless steel trough with drain hole and high trough edge
- L-profile to enable installation in pen partitions
- solid base angle for stability

Product benefits

- stainless steel trough
- includes two drinkers
- optional with circulating piping
- up to 40 animals per feeder
- stainless steel bite protection
- cover for automatic and manual refilling
- infinitely adjustable setting
- large stable ground anchor
- suitable for meal and pellets

The container of the BISTRO W 90 is made from 100% stainless steel and is suitable for CCM!

	BISTRO W 90 P	BISTRO W 90 F	BISTRO W 100 P	BISTRO W 100 F
Item no.	10092	10096	10102	10106
Volume	90 L	90 L	100 L	100 L
Application	piglets	finishing	piglets	finishing

BISTROMat

Product benefits

- stainless steel trough available with one or two drinkers
- dedicated trough design to minimise feed wastage
- dosing above the trough
 - safely avoids blockage due to wet feed
 - guarantees optimal feed hygiene
- integrated mixer to avoid feed bridging
- easy dosing
- easy installation
- 30 – 35 animals per feeder
- allows flexible installation
- stainless steel base-angle, U-profile and square pole available as accessories

Accessories



	BISTROMat B1	BISTROMat B2	BISTRO PD
Item no.	10018	10019	10107
Volume	60L	60L	100 L
Application	piglets	finishing	piglets & finishing
Drinking bowls	1	2	2

BISTRO Drop Feeders

For easy and exact feed adjustment



Product benefits

- easy and accurate adjustment possible
- robust stainless steel slide for feed level adjustment
- large and reinforced front opening for easy adding of medication or feed additives
- easily unassembled for cleaning
- reinforced drop cone interlocking
- cone-shaped feed release

	VD 6			VD 9			VDmin		
	Straight outlet	Eccentric outlet	Double inlet	Straight outlet	Eccentric outlet	Double inlet	Straight outlet	Eccentric outlet	Double inlet
Item no.	10155-T	10155-EX	10155-DE	10160-T	10160-EX	10160-DE	10140	10140-EX	10140-DE
Height in mm	395	395	395	565	565	565	610	610	610
Ø mm	200	200	200	200	200	200	200	200	200
Volume	6 L	6 L	6 L	9 L	9 L	9 L	0,3–10,5 L	0,3–10,5 L	0,3–10,5 L

Accessories

Drop Feeders



Drop feeder with reducing adapter



Splash cover



Double inlet for VD 6 & 9

Item no.: 10151
for filling of two feed types



Pipe adapter 50 mm

Item no.: 10153



Pipe adapter 80 mm

Item no.: 10154



Eccentric outlet

Item no.: 10164



90° Adapter for inlet

Item no.: 10150



Support for water pipe

Item no. F-11322: for 32 mm
Item no. F-11363: for 25 mm

BISTRO STARTER

BISTRO Starter – animal friendly, robust and flexible mountable feeding pan in the well-known MIK quality.

Product benefits

- made from high quality plastic
- 3,5 litre capacity
- large diameter
- robust divider for 6 feeding places
- suitable for dry feed, milk and water
- no wastage or spoiling of feed thanks to high pan sides and solid fixing to the flooring
- long lasting, stable spring

BISTRO Starter with divider	
Item no.	10302
Measurements in mm	Ø 295
Edge height in mm	61
Volume	3,5 L
Feeding places	6 pieces



BISTRO CORNER

BISTRO Corner – a long lasting, strengthened and watertight solution for chain feeding systems.

BISTRO Corner



Product benefits

- torsion-resistant corner
- fully framed groove guide with rubber seal
- completely watertight casing
- sealed bearing pin
- shouldered socket to avoid overinsertion of the conveyor tubes
- self cleaning geometrical spokes
- disc retainer avoids the stop of the wheel
- high quality cast iron wheel
- longlasting stable, stainless-steel spring

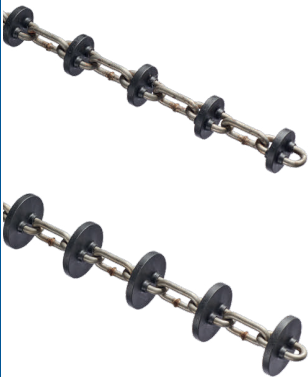
	Corner 90°	Seal	Reinforcement ring
Item no.	F-11143	F-11150-SET	F-11232
Pipe measurement in mm	Ø 60	–	–

Conveyor chains

MLK conveyor chains score with **high stability**
 and **extreme robustness**.

Product benefits

- MADE IN GERMANY
- extreme robustness
- pull-off force of the chain tab
- chain made from manganese steel with high stability and surface hardness
- produced from highest grade material, used in automotive industry
- wide range with various sizes provides highest flexibility



Conveyor chain
Ø 29 mm

Item no.: F-11406

Conveyor chain
Ø 40 mm

Item no.: F-11399



Conveyor chain
Ø 35 mm

Item no.: F-11387



Conveyor chain
Monro Ø 43mm

Item no.: F-11173



Conveyor chain
Ø 44 mm

Item no.: F-11407



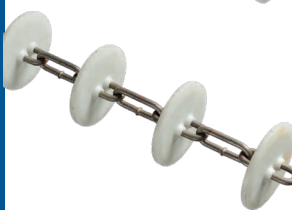
Conveyor chain
Ø 48 mm

Item no.: F-11101



Conveyor chain
Ø 60 mm

Item no.: F-11408



Conveyor chain
Ø 78 mm

Item no.: F-11409

	Ø 29 mm	Ø 35 mm	Ø 40 mm	Ø 43 mm	Ø 44 mm	Ø 48 mm	Ø 60 mm	Ø 78 mm
Item no.	F-11406	F-11387	F-11399	F-11173	F-11407	F-11101	F-11408	F-11409
Disc pitch in mm	50,4	51	50,4	71,5	71,5	71,5	88	88
Material	PA GF	PA	PA GF	PA GF	PA GF	PA	PA GF	PA GF

Accessories

Final steps to a perfect barn

Product benefits

- easy assembly
- intelligent solutions
- occupation for pigs

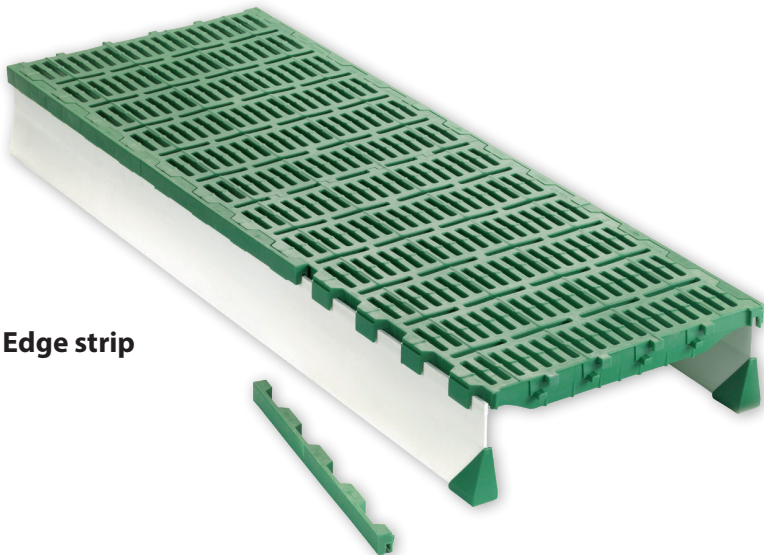


Edge strips

The edge strips provide a **clean finish**, ensuring a **proper closing of expansion gaps** and **smooth connection to concrete areas**.



Expansion gap with edge strip

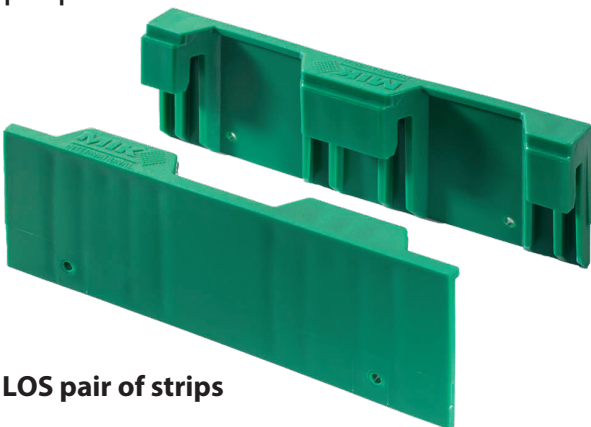


Edge strip

Edge strip	
Item no.	00191
Measurements in mm	400

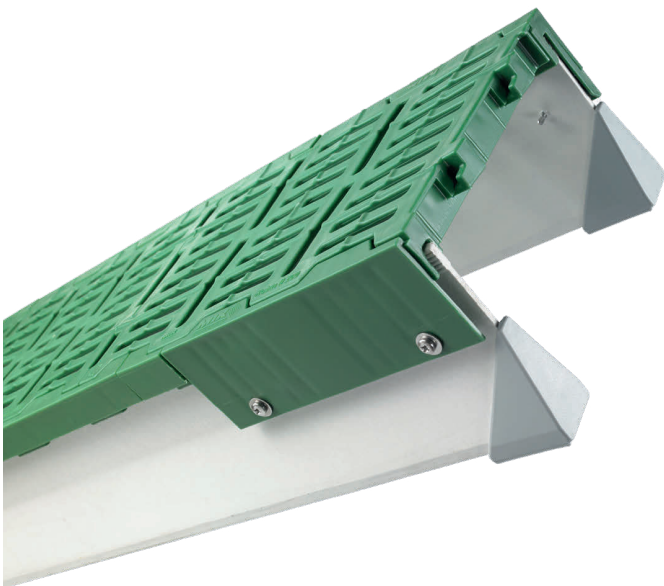
LOS

With the MIK LOS „lift out system“, you can **combine the advantages of the MIK flooring** with a **movable floor system**. By using the LOS system, you create **units of panels** and **support beams which are easy to handle**. The flooring can be disassembled quickly and meanwhile, the barn can be cleaned or used for another purpose.



LOS pair of strips

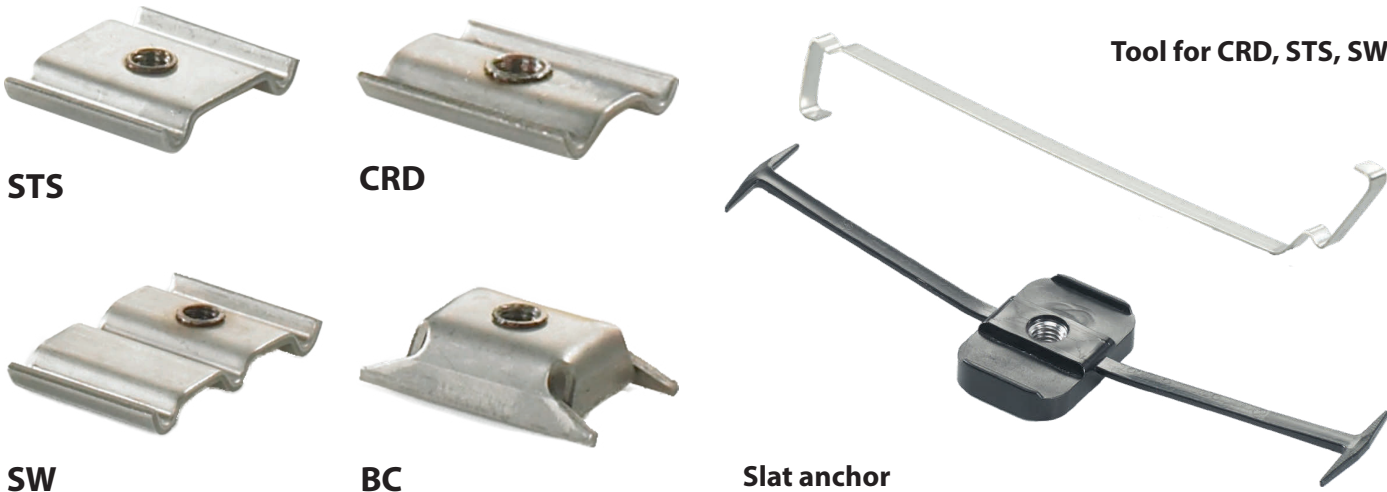
	LOS pair of strips	LOS screw set
Item no.	04202	04205
Measurements in mm	200	4,8×25



LOS

Installation material

The small **installation aids** ensure **simple mounting** of penning systems and feeders on MIK flooring and concrete slats.



	STS	CRD	SW	BC	Slat anchor
Item no.	17033	17020	17050	17040	17075
Application	STEPPER TRAPPER SMARAGD	CHESS RUBIN DIAMANT	SWING	concrete slats	for all plastic slats



Anchor screw set for wall mounting system

Product benefits

- 100% stainless steel prevents corrosion
- ideal force distribution on panels or DUOs
- the right mounting for all types of beams
- special screw sizes matching different panel types and support systems

Screw type	Screw set 8×50	M 8×65*	M 8×90*	M 8×120*
Item no.	00432-SET	17065	17090	17120

* Torx 50 with security painting

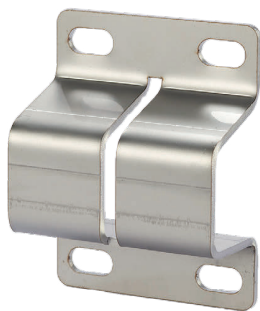
Installation material



DUO clamp stainless steel



DUO clamp stainless steel,
corner use



Wall clamp for flat steel bars,
stainless steel



Pedestal for flat steel bars, big



DUO pedestal

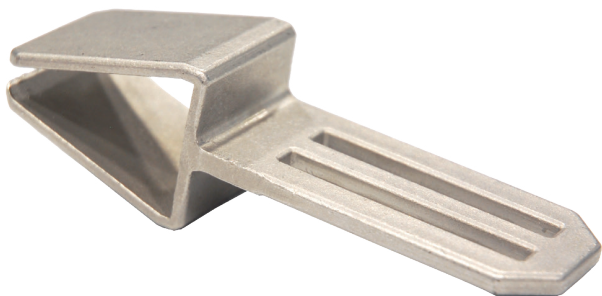


Pedestal for flat steel bars

	DUO clamp stainless steel	DUO clamp stainless steel, corner use	Wall clamp for flat steel bars, stainless steel	Pedestal for flat steel bars, big	DUO pedestal	Pedestal for flat steel bars
Item no.	00430	00430-E	00435	24220	00423	00410



J-Hook



DUO TRACK

	J-Hook	DUO TRACK
Item no.	17010	00455
Application	DUO and steel supports	mounting with DUO beams

GULLY

MIK Gullies allow cleaning your barn **quickly and uncomplicatedly.**



Gully concrete inlet with support strips



Gully concrete inlet

	Gully Flap	Gully concrete inlet 400x200	Gully concrete inlet 500x200	Gully concrete inlet 600x200
Item no.	00129	39017	39026	39028
Measurements in mm*	98×347	373×200	473×200	573×200
Opening	10×85 mm	10×230 mm	10×327 mm	10×427 mm

* Dimensions in width × length

Grüne Rinne

The "Grüne Rinne" drain pipe offers a **flexible and easy to assemble system for drainage** of floors, dungheaps, flat silos and composting installations. The pipe can be equipped with four different types of spouts.



Product benefits

- high quality design
- cost saving alternative to PVC piping
- versatile usage
- easy installation

Drainage solution "Grüne Rinne"



	orange spouts	yellow spouts	blue spouts	red spouts
Item no.	00212	00213	00214	00218
Spout height in mm	51	46	71	71
Pipe-diameter in mm	125	125	125	160

MIK ROLLS & MIK TOY

The successful duet MIK TOY and MIK ROLLS offers **top-quality playing material** for **occupying pigs** of all ages **ideally and sustainably**.

Product benefits MIK ROLLS

- MIK rolls are made from wheat and rape straw, compressed dust-free
- supplemented raw fibres effectively support the digestion process
- complies with legal EU regulations governing the provision of changeable manipulable materials
- MIK ROLLS are quickly accepted by the animals
- bacteriologically safe as they are compressed under heat during the production process
- MIK ROLLS are QS-approved

Product benefits MIK TOY

- effectively reduces stress
- minimises behavioural disorders such as tail biting
- made of stainless steel for a maximum life span
- easy to assemble
- easy to refill
- up to 30 animals per TOY



MIK ROLLS



MIK TOY

	MIK TOY	MIK ROLLS
Item no.	31005	31013
Measurements in mm	80 × 580	–
Material	stainless steel	20 kg box



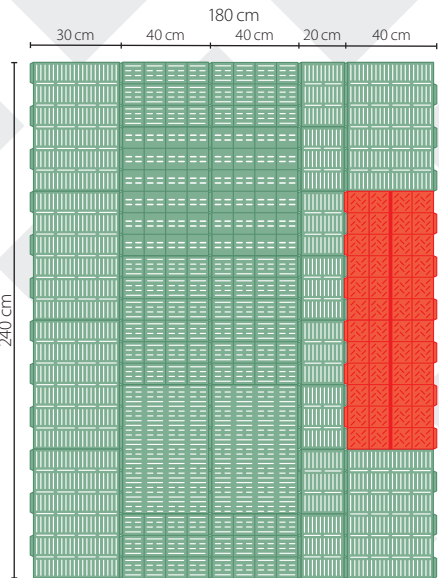
Playing material

MIK rope clamps were developed for the **fast and economic installation** of playing ropes. Time-consuming knotting and installing of the rope is no longer necessary.

	Rope clamp	Cam cleat	Cotton rope 8 mm
Item no.	31031	31032	31033
Measurements in mm*	55 × 110	37 × 240	250 m roll

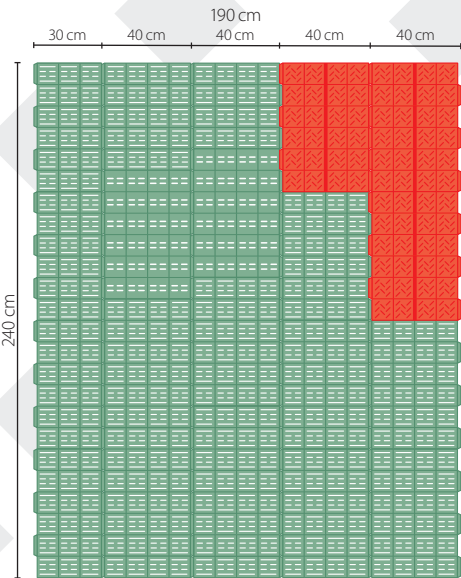
* Dimensions in width × length

Layout samples



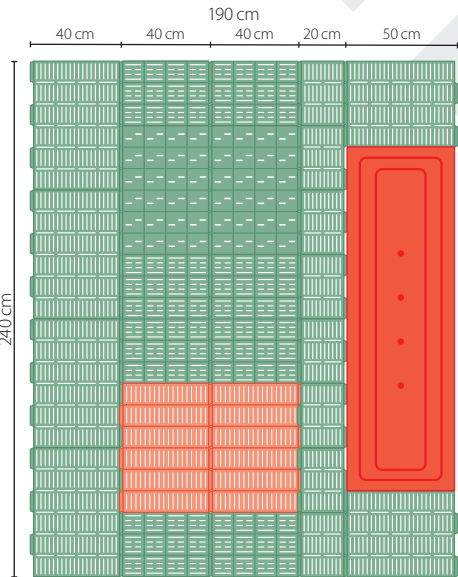
Straight penning

Material:
Mix of plastic & heated lying area for piglets



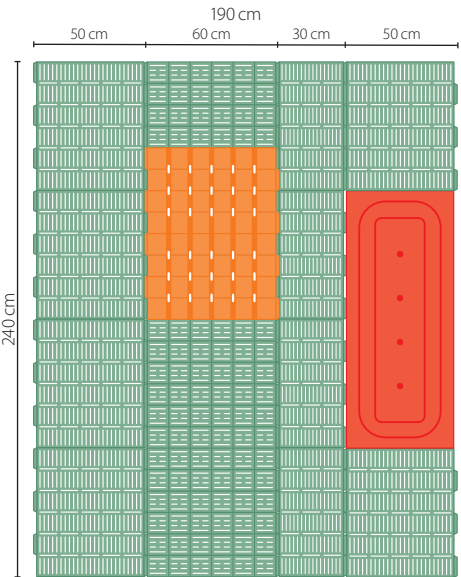
Diagonal penning

Material:
Plastic & heated lying area for piglets



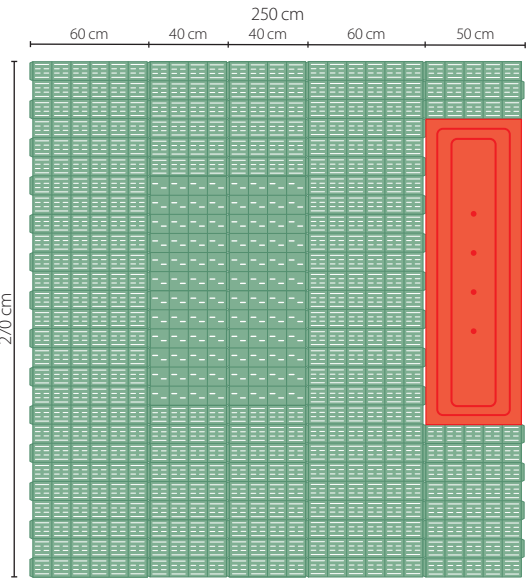
Straight penning

Material:
Mix of cast, plastic & heated lying area for piglets



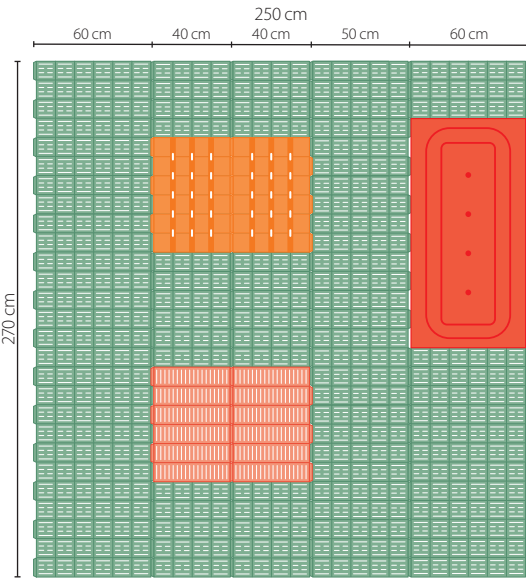
Straight penning

Material:
Mix of plastic, cast or concrete & heated lying area for piglets



Freedom crate

Material:
Mix of cast, plastic & heated lying area for piglets

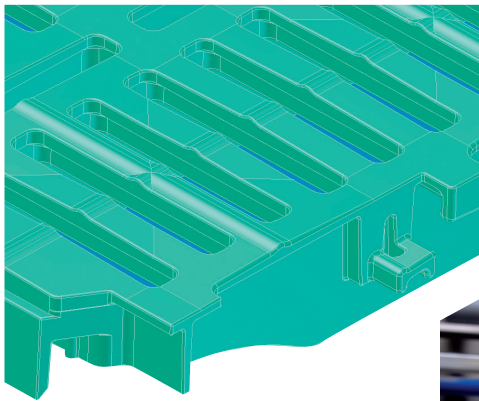


Freedom crate

Material:
Mix of plastic, cast or concrete & heated lying area for piglets

MIK – the benchmark for pioneer performance

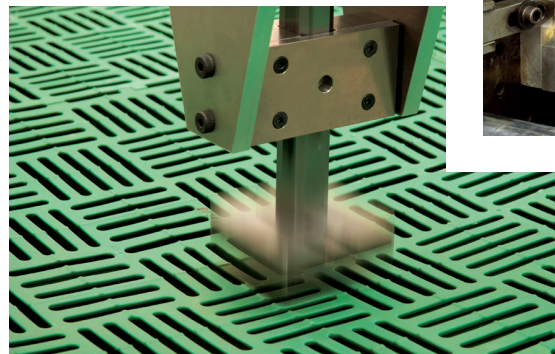
Questioning existing standards and **actively involving our customers in the innovation process** surely belongs to the traditional strengths of MIK. Thanks to these “virtues” and the **close cooperation** with **highly reputed technological partners** we are succeeding in **setting the standards for new developments** of plastic based flooring systems.



Improvement and innovation start with ideas and approaches turning into clear shapes and pictures. What is being visualized with modern CAD techniques in our laboratories ...



... is later being manufactured by high-tech injection-moulding machines.



Extreme endurance simulations and inspections ensure a sustainable high quality.

The main pillars of MIK:

- close customer service
- assembly without problems
- cost efficient operation
- extreme durability
- outstanding product life span
- animal friendliness



Quality testing station

